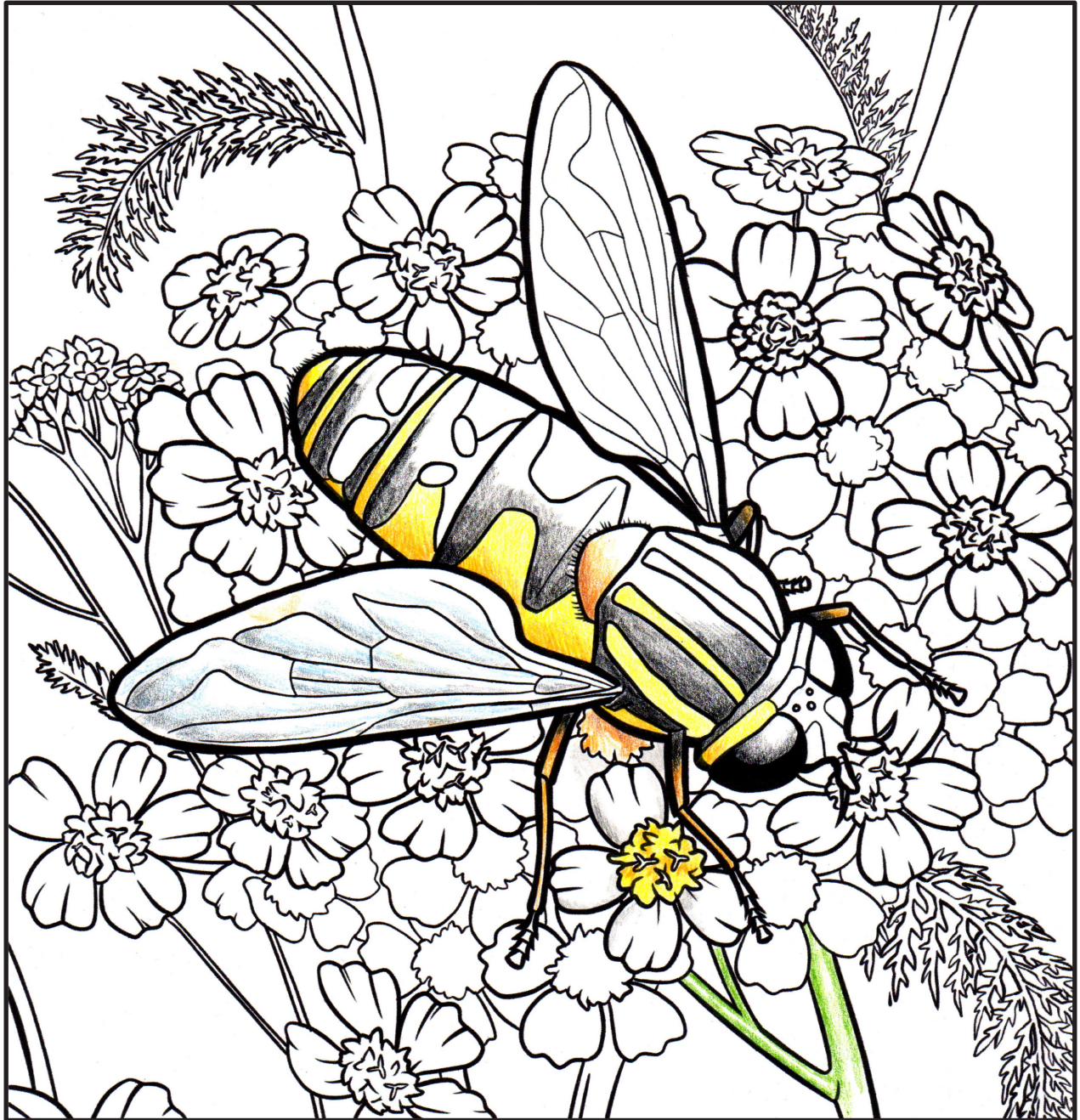


Pollinators of Alaska

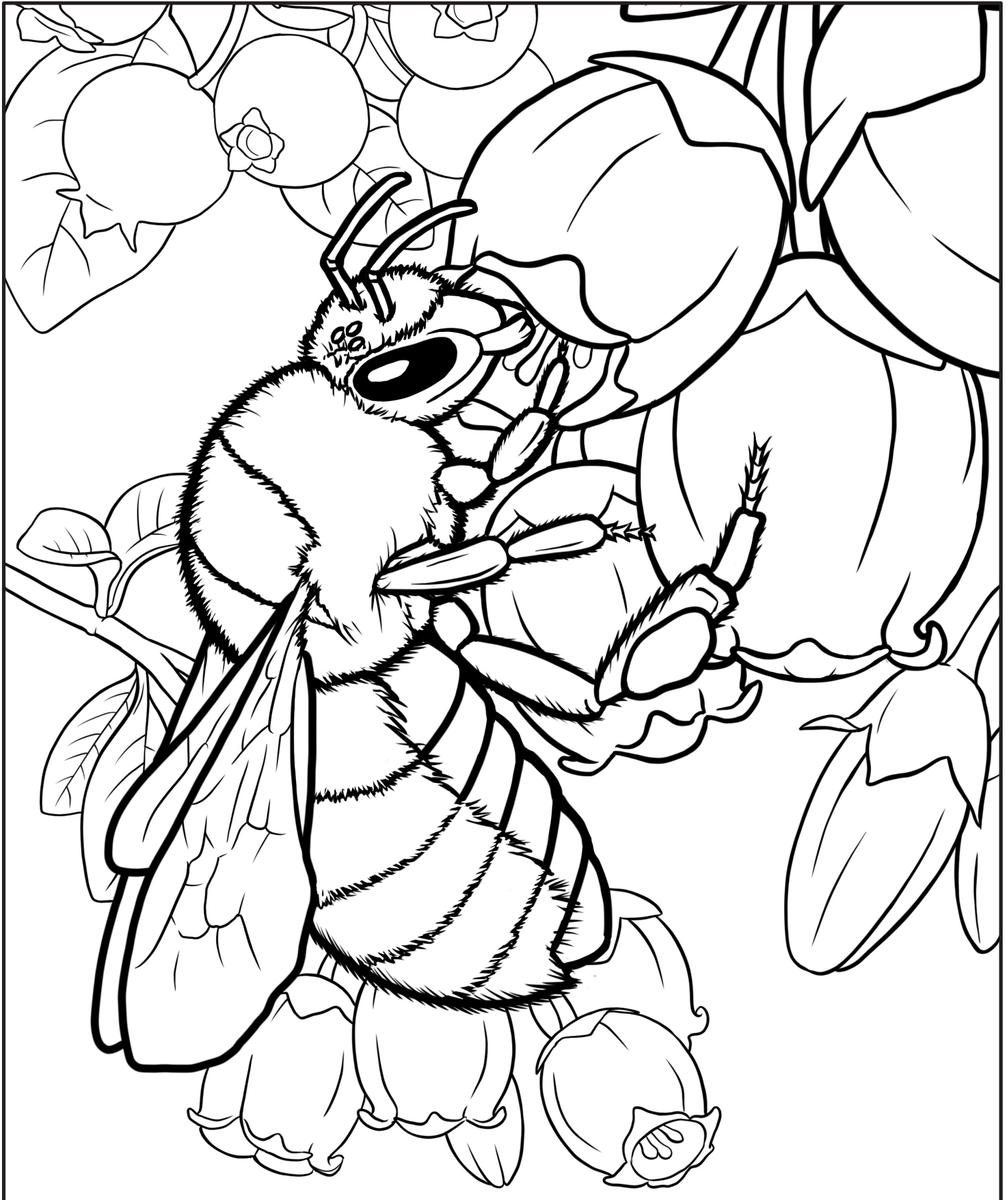
Coloring book



Forest bumble bee

Bombus sylvicola

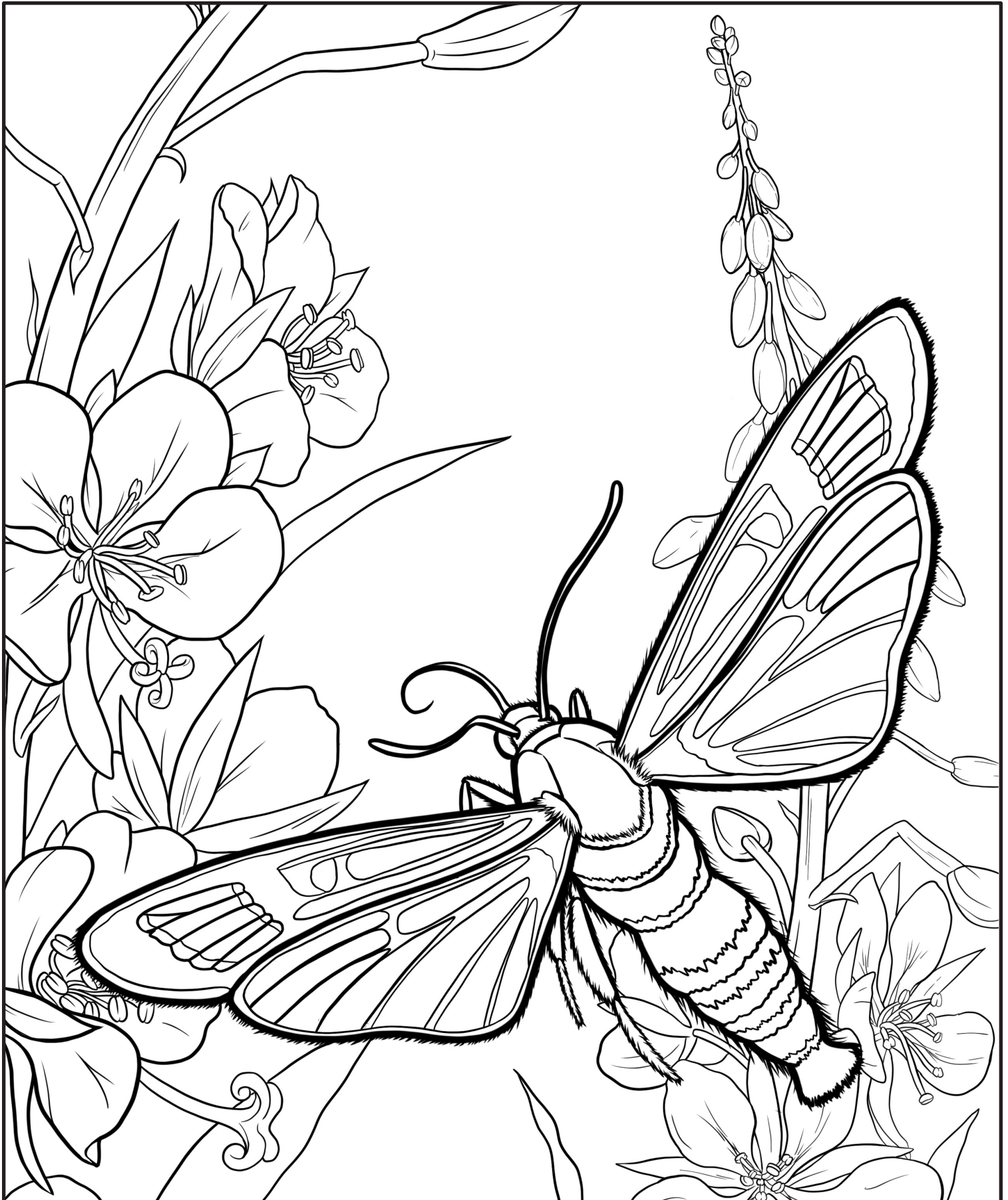
Can you see the lump of pollen that this bee is collecting on its hind leg? Bumble bees pollinate many flowers, including blueberries. The berries are a favorite food of grizzly bears in the fall when they are fattening up for winter.



Fireweed clearwing moth

Albuna pyramidalis

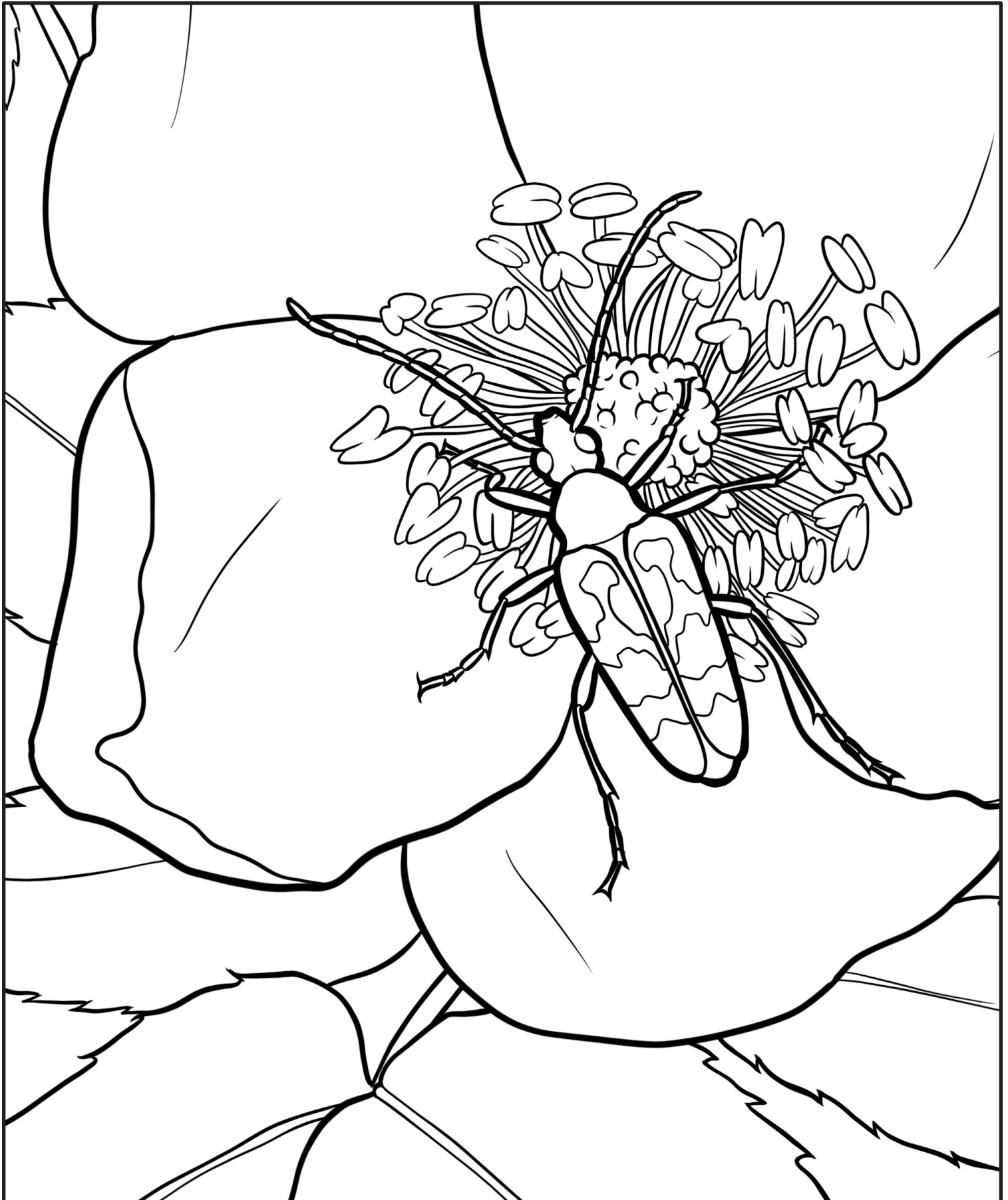
The caterpillars of fireweed clearwing moths feed on the roots of fireweed. Unlike most caterpillars that munch on leaves, these caterpillars dig under the ground to find the roots. The adult moths eat nectar and resemble bees or wasps.



Flower longhorn beetle

Judolia montivagans

Adult flower longhorn beetles feed on the pollen of many kinds of flowers. Their black and yellow coloring makes them look like bees, but their antennae are much longer. Larvae of the beetles feed on wood.



Woolly-tailed marsh fly

Helophilus hybridus

Adult woolly-tailed marsh flies feed on nectar and pollen just like bees. They look like bees and fool predators into thinking they can sting. Count the number of wings--only two, compared to four wings on a bee.



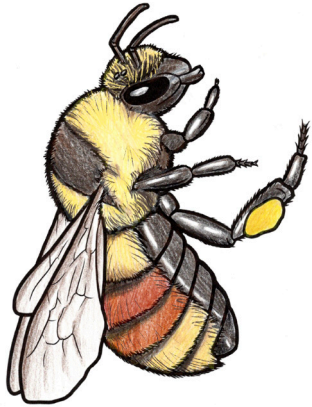
Frigid leafcutter bee

Megachile frigida

Leafcutter bees line their nests with round bits of leaves that they cut out with their big mandibles. These bees carry pollen on dense hair that covers the underside of their abdomen, so you will often see them with yellow bellies.



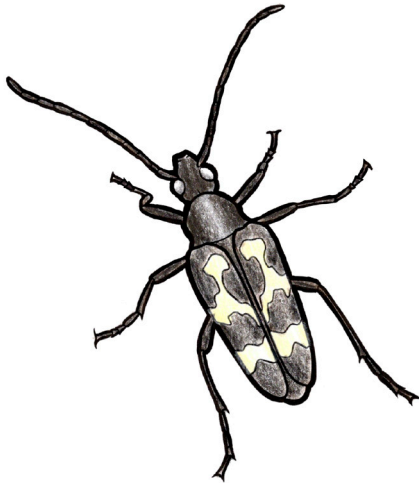
Pollinators of Alaska



Forest bumble bee
Bombus sylvicola



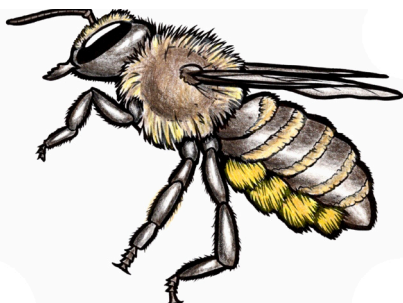
Fireweed clearwing
moth
Albuna pyramidalis



Flower longhorn
beetle
Judolia montivagans



Woolly-tailed
marsh fly
Helophilus hybridus



Frigid leafcutter bee
Megachile frigida